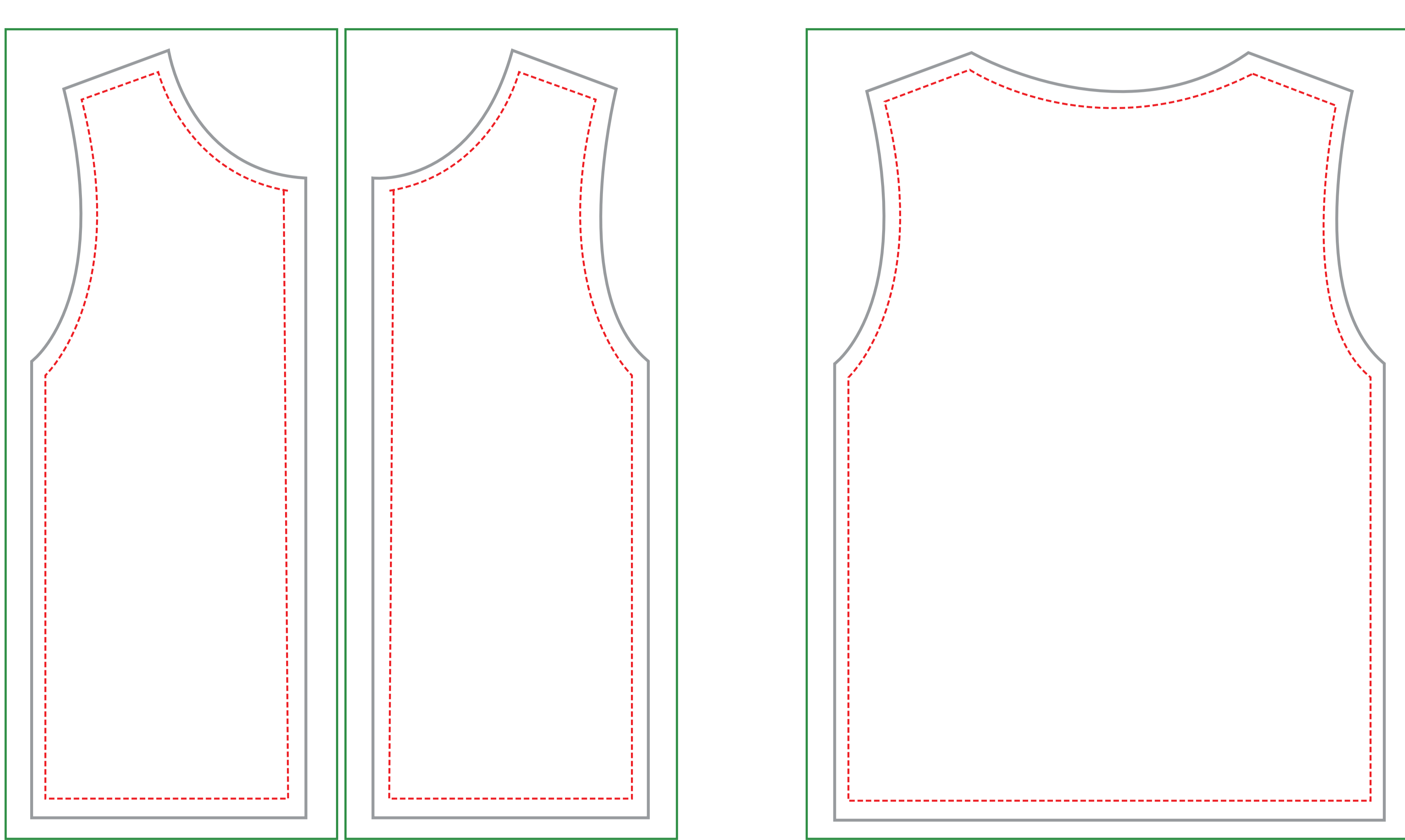


Collar

- Artwork Area(Printing Bleeding line)
- Cutting Piece(Cutting Line)
- Finished Apperal(Sewing Line)

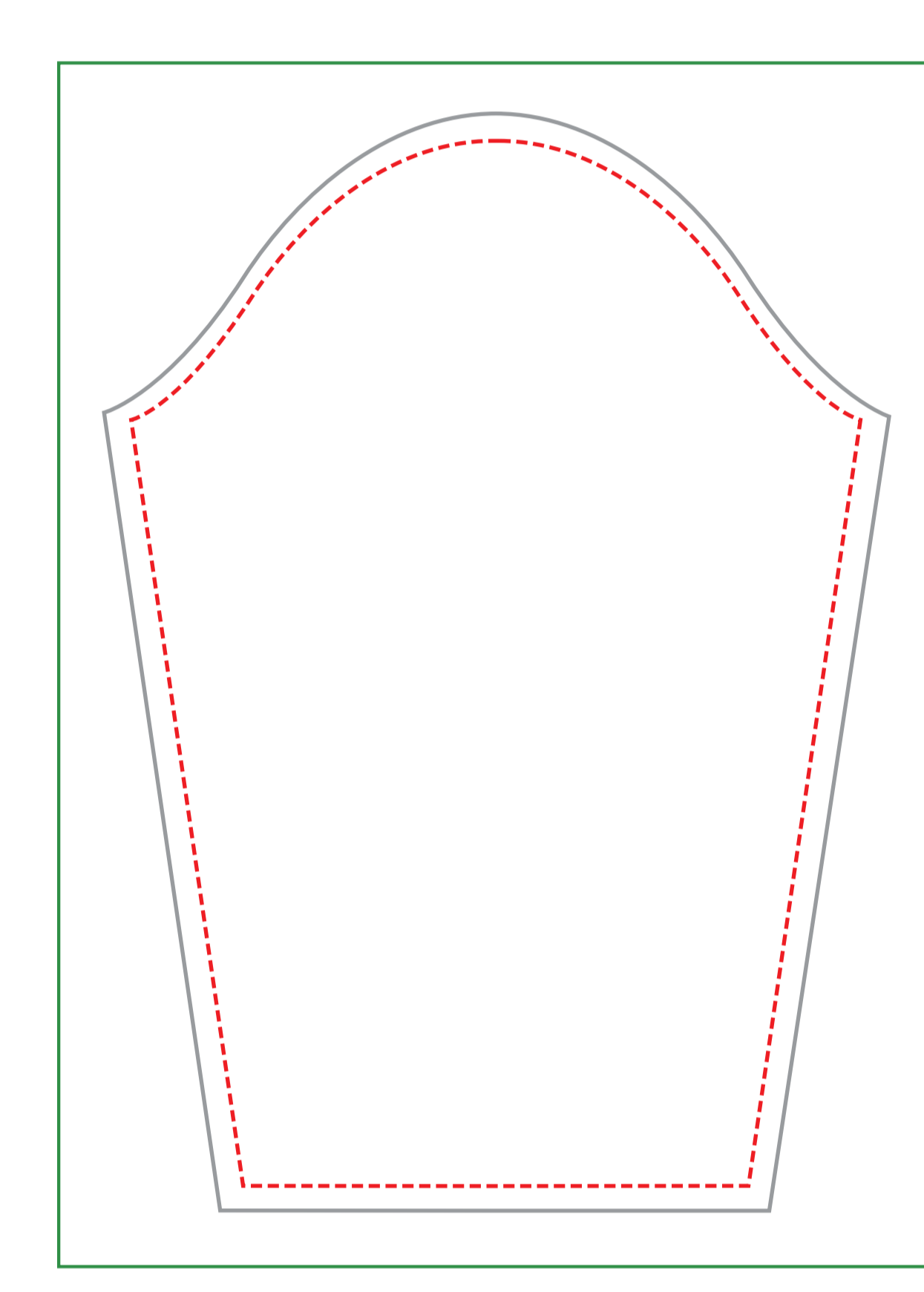
Remarks: Different outlook will happen cause by different sizes on the rim of horizontal and vertical, so please provide vector file of artwork in rectangular, or high resolution image with 300DPI at least.



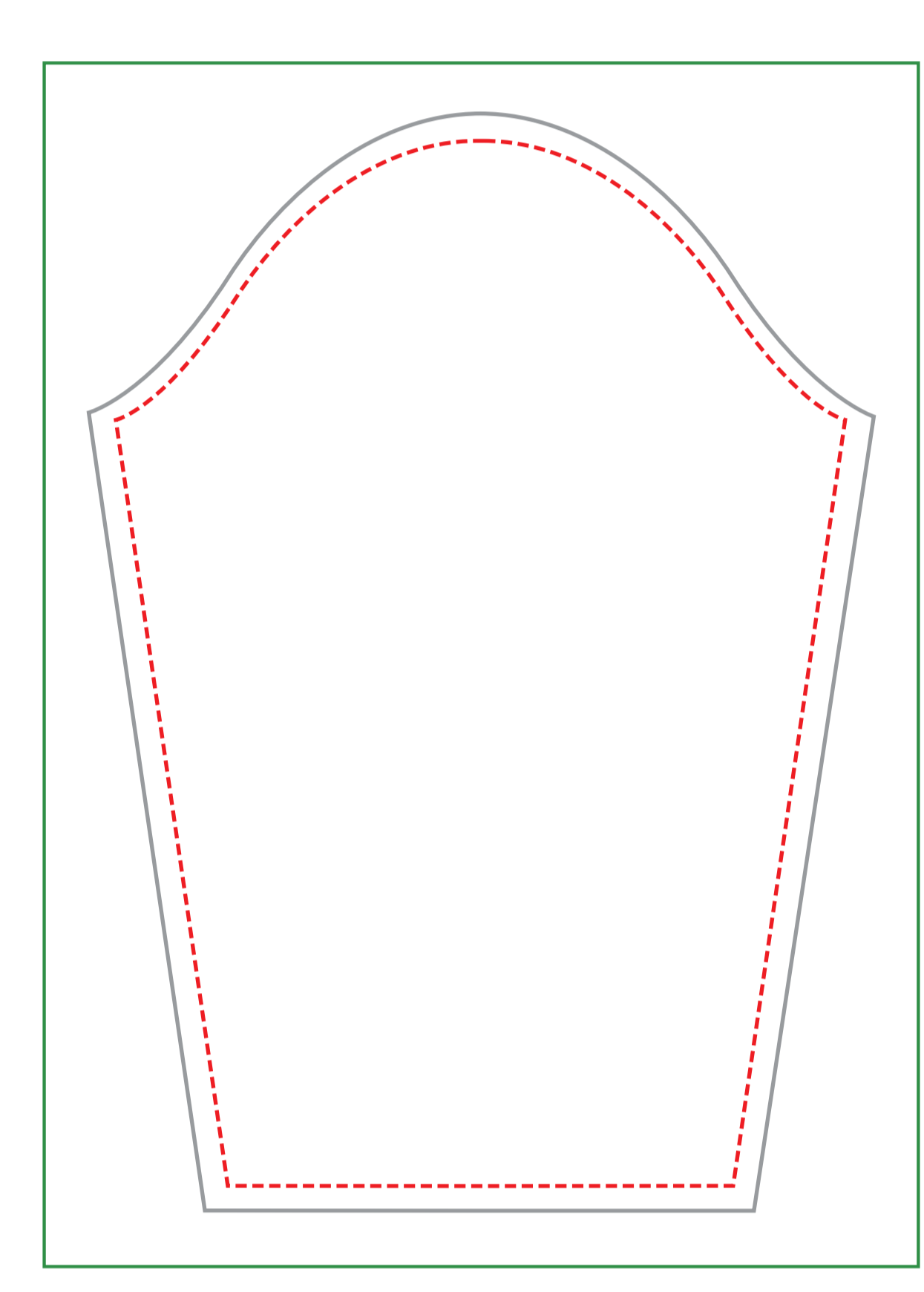
Front Piece-Left

Front Piece-Right

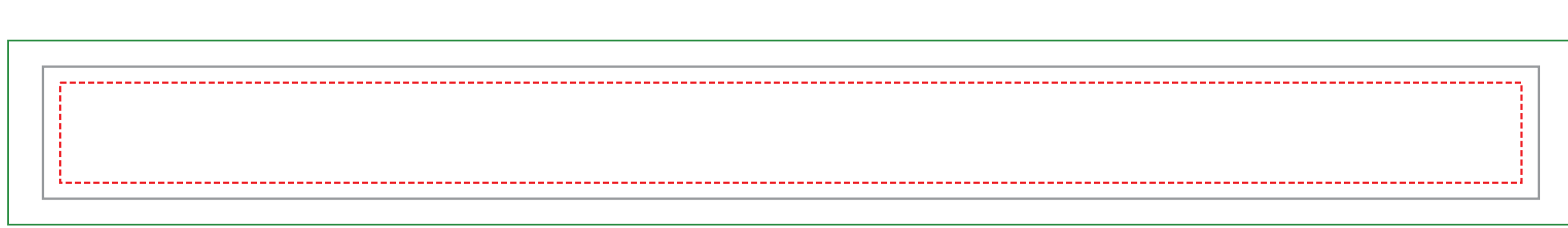
Back Piece



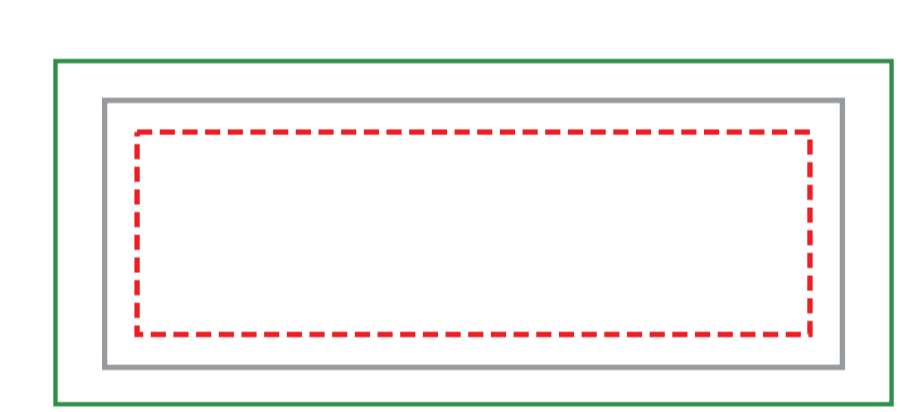
Left sleeve



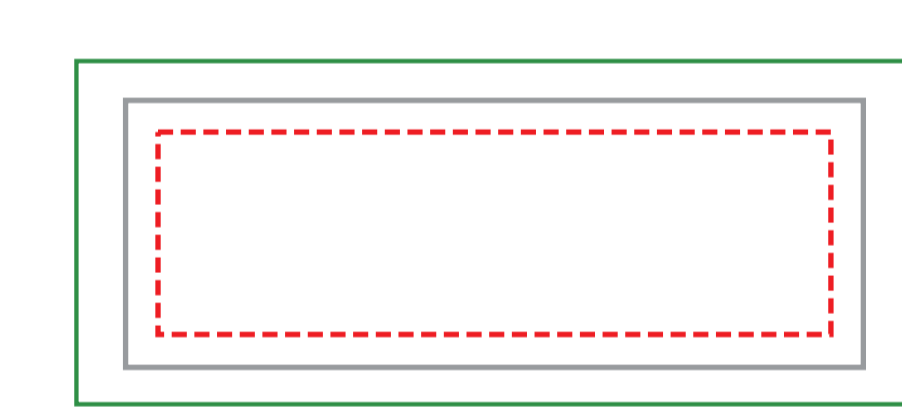
Right Sleeve



Hem rib



Left Hem rib



Right Hem rib

